

POSystem1

USER MANUAL 1.0

General features:

- Package tracking
- **Views** – all, open, due, late and approaching POs
- Receive and close a PO single touch button
- Choose which PO block or set you are currently using
- Dispense PO's to specific employees for future use
- Can use company info and logo on PO sheet
- Modify terms and save in a terms database
- Included vendor database with autodial capabilities
- Included shipper database with customizable shipping rates
- Inventory system to quickly search and find where to buy a certain part for the lowest price using wildcard system
- Customize the notes at the bottom of the PO
- Default sales tax information if applicable
- Bill Parts to different jobs under one PO

Manual - Contents

1. Configuring your software
2. Vendors
3. Terms
4. Ship to locations
5. Navigating through and adding PO's
 - a. Navigating through records
 - b. Adding New Records
 - c. Searching for specific PO information
 - d. Quick Filters
6. Inputting goods ordered
7. Receiving goods ordered
8. Ship to Locations
9. Searching the PO inventory
10. Reporting
11. Technical support
12. Making the database multi-user
13. Modifying POSystem1

- Displays goods still on order with days late per item
- Receive partial or all parts in a PO, per shipment
- Fully network enabled (with purchase of un-compiled version)
- **And anything you wish to add!!!!**

Printable Reports:

- Job Costs
- Supplier Ratings - Based on price of items and punctuality
- Purchaser of the month - based on cutting costs for frequently ordered items
- **And anything you wish to add!!!!**

Screen Reports:

- All can be exported to any office application
- Employee performance scores with drilldown capability to see where they were in error or where they excelled with specific suppliers/parts
- Supplier ratings
- Parts often bought overpriced
- Purchaser ratings
- Job costs with optional date span
- **And anything you wish to add!!!!**

Configuring your software

Purchase Orders - All

PO No: 20534 Closed SalesTax sent to Main On:
 Invoice No: 002342 Line Default Job: 560400
 Vendor: United Rentals ShipVia: WillCall
 Date Ordered: 3/5/2002 Ship Method: N/A
 Responsible Emp: Employee1 Shipping Price: \$9.40
 Line Default ETA: 3/5/2002 Tracking NO: LV7723423344
 Ship To: Trans Tech Electric Terms: Net

Preview PO **Config. Menu**
 Print PO **Reports Menu**
 Datasheet **PO Inventory**
 due closed
 open all
 overdue
 Receive All Items Now

Item	StockNo	QTY Ordered	QTY Received	QTY Remaining	ETA	Days
FILTER, AIR FORAM PRE	422314106C	1	1	0	3/5/2002	27
MUFFLER	422314006C	1	1	0	3/5/2002	27
SCREEN STIHL	422314190C	1	1	0	3/5/2002	27
CLIP/SPARK ARRESTOR-	422314166C	1	1	0	3/5/2002	27
FILTR, AIR MAIN TS4	422314103C	1	1	0	3/5/2002	27
EXHAUST GASKET 034,	112514906C	1	1	0	3/5/2002	27
ENVIRONMENTAL CHARGE		1	1	0	3/5/2002	27
LABOR	LABOR	1	1	0	3/5/2002	27

Record: 1 of 8
 Record: 2 of 4

Double-Click the "Configuration menu" button to open the configuration form represented below.

Configuration Menu

PO No's. In System: 4 (Open) 4 (Closed) 0
 PO No's. Remaining: 9432
 The Next PO will be: 20568
 PO SetNo: 5
 Current Bottom: 20000
 Current Top: 29999
 You are Logged in As: Employee1
 StateCode: AZ Administrator
 Encrypted Password: znpbza
 PW: 9985
 Save and Close

Enter New PO Block
 Edit Shippers
 Edit Units
 Edit Vendors Form
 Edit Ship To Locations Form
 Edit Terms
 Modify Company Info
 Modify notes at bottom of PO
 Modify Employees
 Pick Current User
 Linked Data Locations Add
 Close out Received PO's Show
 About POsystem

Preview PO **Config. Menu**
 Print PO **Reports Menu**
 Datasheet **PO Inventory**
 due closed
 open all
 overdue
 Receive All Items Now

Remaining	ETA	Days
0	3/5/2002	27
0	3/5/2002	27
0	3/5/2002	27
0	3/5/2002	27
0	3/5/2002	27
0	3/5/2002	27
0	3/5/2002	27
0	3/5/2002	27

Record: 2 of 4

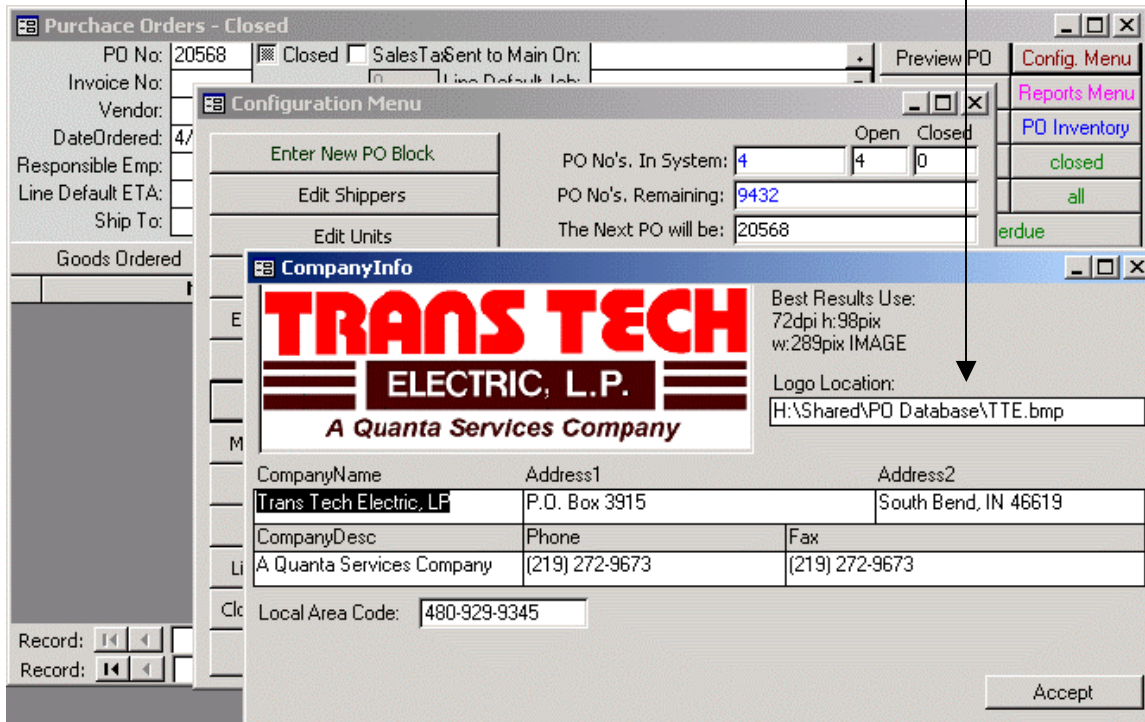
- Pick Current User:** When in a multi-user environment you must choose the name of the employee at each workstations install
- Enter New PO block:** Enter a block of PO's for the system to work in-between
- Close Out Received PO's:** Close PO's where all parts have been received and not been closed.
- Modify Company Info:** Change the information that is displayed on the PO printout. Logo, Name Address, Etc..

When updating company information a logo must be supplied if you choose to have your Logo on the printable PO form. The logos dimensions are critical for the appearance of the image. Use an image editor to make the appropriate file to be placed in the path marked "Logo Location".

Use 72dpi for the resolution
Width must be 289 Pixels
Height must be 98 Pixels

Note:

If the source code is purchased the whole report can be redrawn if desired.



Vendors

Purchase Orders - All

PO No: 20534 Closed Sales Tax Sent to Main On:
 Invoice No: 002342 Line Default Job: 560400
 Vendor: United Rentals Ship Via: WillCall
 Date Ordered: 3/5/2002 Ship Method: N/A
 Responsible Emp: Employee1 Shipping Price: \$9.40
 Line Default ETA: 3/5/2002 Tracking NO: LV7723423344
 Ship To: Trans Tech Electric Terms: Net

Preview PO Config. Menu
 Print PO Reports Menu
 Datasheet PO Inventory
 due closed
 open all
 overdue

Item	StockNo	QTY Ordered	QTY Received	QTY Remaining	ETA	Days
FILTER, AIR FORAM PRE	422314106C	1	1	0	3/5/2002	27
MUFFLER	422314006C	1	1	0	3/5/2002	27
SCREEN STIHL	422314190C	1	1	0	3/5/2002	27
CLIP/SPARK ARRESTOR-	422314166C	1	1	0	3/5/2002	27
FILTR, AIR MAIN TS4	422314103C	1	1	0	3/5/2002	27
EXHAUST GASKET 034,	112514906C	1	1	0	3/5/2002	27
ENVIRONMENTAL CHARGE		1	1	0	3/5/2002	27
LABOR	LABOR	1	1	0	3/5/2002	27

Record: 1 of 8
 Record: 2 of 4

Double-Click the "Vendor" field and you can edit the current vendor in the form that will appear. Vendor form represented below.

Vendors

Company Name: Border State Electric - BSE Contact: Bruce Entered By: Wendi Mullins
 Address: 5519 East Washington Phone: (602) 244-0331 Entered On: 2/22/2002
 Phoenix, AZ 85034-2133 Fax: (602) 231-8335 Modified By: Justin Sapiro
 Account No: ID: 8
 Default sales tax rate for this vendor
 Notes:

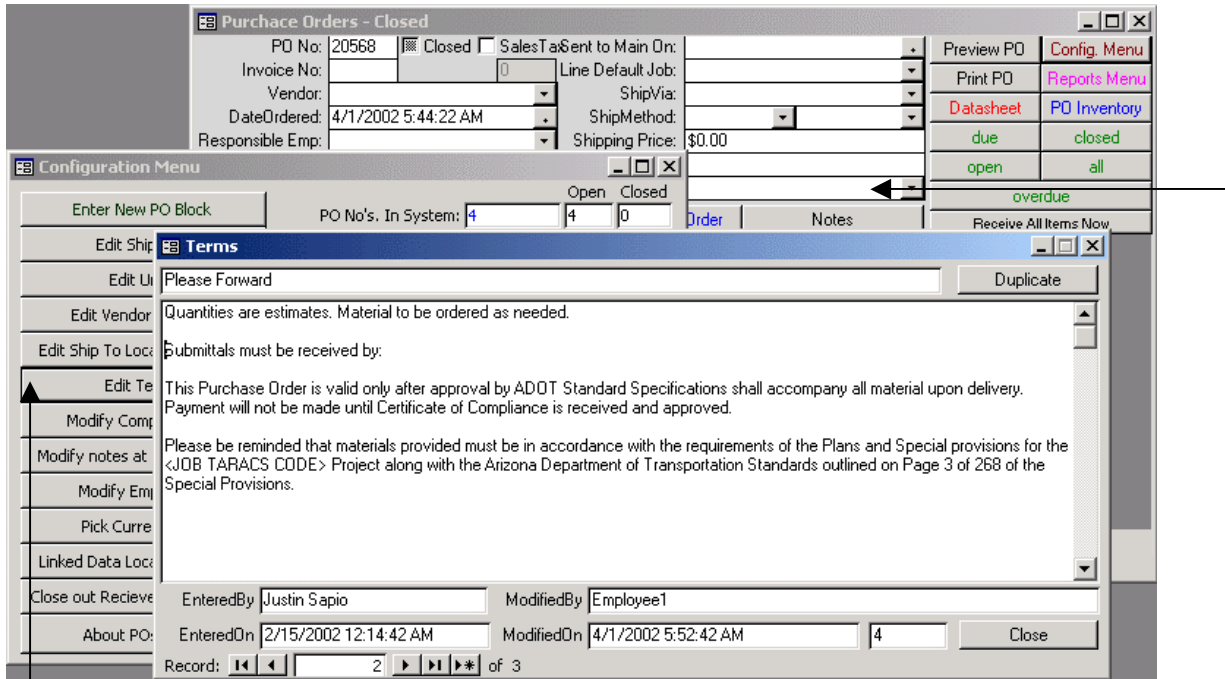
Date	Notes
4/1/2002	

Record: 1 of 1 (Filtered)

Default sales tax for this vendor will enable the user to just check the sales tax box on the "main PO form" and have the current rate appear for the specific PO where the box is checked. The box below will become enabled and the value can be changed for a specific case at that time.

Vendors can be edited all at once by using the Configuration Menu by clicking the "Configuration Menu" button on the main PO form.

Editing the specific terms that can be included in the print form PO



There are two ways to edit terms. The first method is from the configuration menu and the other way is to edit the terms by clicking the Terms field on the main PO menu. When you click the field you will be prompted with a dialog representing the term that was previously selected. You can view all the terms by clicking the button on the upper toolbar.

Editing ship to locations

Purchase Orders - All

PO No: 20534 Closed Sales Tax Sent to Main On:

Invoice No: 002342 Line Default Job: 560400

Vendor: United Rentals Ship Via: Will Call

Date Ordered: 3/5/2002 Ship Method: N/A

Responsible Emp: Employee1 Shipping Price: \$9.40

Line Default ETA: 3/5/2002 Tracking NO: LV7723423344

Ship To: Trans Tech Electric Terms: Net

Preview PO [Config. Menu](#)

Print PO [Reports Menu](#)

[Datasheet](#) [PO Inventory](#)

due closed

open all

overdue

Receive All Items Now

Item	StockNo	QTY Orderd	QTY Recieved	QTY Remaining	ETA	Days
FILTER, AIR FORAM PRE	422314106C	1	1	0	3/5/2002	27
MUFFLER	422314006C	1	1	0	3/5/2002	27
SCREEN STIHL	422314190C	1	1	0	3/5/2002	27
CLIP/SPARK ARRESTOR-	422314166C	1	1	0	3/5/2002	27
FILTR, AIR MAIN TS4	422314103C	1	1	0	3/5/2002	27
EXHAUST GASKET 034,	112514906C	1	1	0	3/5/2002	27
ENVIRONMENTAL CHARGE		1	1	0	3/5/2002	27
LABOR	LABOR	1	1	0	3/5/2002	27

Record: 1 of 8

Record: 2 of 4

By double-clicking the ship to field you can pull up the form below.

ShipToLocations

Turnippers Phone: (480) 839-9245

2236 E. Salado Parkway Fax: (480) 839-9422

Tempe, AZ 85280 4

Crossland Suites Phone: (512) 811-6812

1242 West Walnut Hill Lane Fax: (512) 728-6580

Irving, Texas 75038 5

* Phone: []

Fax: []

[toNumber]

Record: 1 of 2

These buttons will start the windows auto dialer to initiate the telephony functions of your modem

Line item navigation

Navigating through records.

The screenshot shows the 'Purchase Orders - All' window. At the top, there are fields for PO No: 20534, Invoice No: 002342, Vendor: United Rentals, Date Ordered: 3/5/2002, Responsible Emp: Employee1, Line Default ETA: 3/5/2002, Ship To: Trans Tech Electric, Line Default Job: 560400, Ship Via: w/call, Ship Method: N/A, Shipping Price: \$9.40, Tracking NO: LV7723423344, and Terms: Net. On the right, there are buttons for Preview PD, Print PD, Datasheet, due, open, closed, and all. Below this is a table with columns: Item, StockNo, QTY Orderd, QTY Received, QTY Remaining, ETA, and Days. The table contains 8 rows of items. At the bottom, there are two record navigation bars: 'Record: 1 of 8' and 'Record: 2 of 4'. A box labeled 'Line item navigation' has an arrow pointing to the 'Record: 1 of 8' bar.

Item	StockNo	QTY Orderd	QTY Received	QTY Remaining	ETA	Days
FILTER, AIR FORAM PRE	422314106C	1	1	0	3/5/2002	27
MUFFLER	422314006C	1	1	0	3/5/2002	27
SCREEN STIHL	422314190C	1	1	0	3/5/2002	27
CLIP/SPARK ARRESTOR-	422314166C	1	1	0	3/5/2002	27
FILTR, AIR MAIN TS4	422314103C	1	1	0	3/5/2002	27
EXHAUST GASKET 034,	112514906C	1	1	0	3/5/2002	27
ENVIRONMENTAL CHARGE		1	1	0	3/5/2002	27
LABOR	LABOR	1	1	0	3/5/2002	27

1st, Previous, Next, Last buttons to navigate according to sort choice. Default sort type is the PO number. To sort click on field that you wish to sort by and click either or

Adding New Records.

This screenshot is identical to the one above, showing the 'Purchase Orders - All' window with the same data and navigation controls. An arrow points from the 'Record: 2 of 4' bar to a text box below.

Click here to go to the next available Purchase Order

Searching for specific PO information

Record: 1 of 3
Record: 1 of 3 (Filtered)

You can apply custom filters to only show data that meets your criteria. Right-Click on the field that you want to add the filter to and type in the data either verbatim or by using wildcards "*" as in the example above.

Quick Filters

Record: 1 of 8
Record: 2 of 4

Quick filters can be used to display the records you wish to examine. Records can be added when any filters are applied.

Inputting goods ordered

Purchase Orders - All

PO No: 20549 Closed Sales Tax Sent to Main On:

Invoice No: Line Default Job: 01-396

Vendor: Acterna Ship Via: UPS

Date Ordered: 3/1/2002 4:09:21 PM Ship Method: Ground Supplier Incurs:

Responsible Emp: Employee2 Shipping Price: \$0.00

Line Default ETA: 3/11/2002 Tracking NO:

Ship To: Ed Gleckler Room 228 c/o C Terms: Net

Preview PO Config. Menu

Print PO Reports Menu

Datasheet PO Inventory

due closed

open all

overdue

Receive All Items Now

Goods Ordered Goods Received Goods Still on Order Notes

Line	StockNo	Item	Qty	Unit	Price	Total	JOB	Highli	ETA
53		SCA/PC Type Single Mode Patch C	36	ct.	\$0.0000	\$0.0000	01-396	<input type="checkbox"/>	3/11/2002
54		FOSC 400 A4 Closure w/ One Tr	7	ct.	\$97.2800	\$680.9600	01-396	<input type="checkbox"/>	3/11/2002
55		FOSC 400 Slack Basket	7	ct.	\$17.4500	\$122.1500	01-396	<input type="checkbox"/>	3/11/2002
56		19" Front Panel Patch Panel 12 Pt	6	ct.	\$345.0000	\$2,070.0000	01-396	<input type="checkbox"/>	3/11/2002
102	10453	CAR - E997J-CAR 2-IN PVC BELL	10	ct.	\$2.3000	\$23.0000	00-200	<input type="checkbox"/>	
*		er)	0		\$0.0000	\$0.0000	01-396	<input type="checkbox"/>	3/11/2002

Record: 1 of 5

Record: 3 of 4

Parts existing as ordered parts in the current Purchase Order

Where user can enter new data for the current PO. (Last Line indicated with a Star) When user begins typing database tries to match from previously ordered parts. If part was previously ordered Stock Number and price for the current supplier will be automatically filled in.

Receiving goods ordered

Purchase Orders - All

PO No: 20567 Closed Sales Tax Sent to Main On: Preview PO Config. Menu
 Invoice No: 2342334 Line Default Job: 00-200 Print PO Reports Menu
 Vendor: Border State Electric - BSE Ship Via: Datasheet PO Inventory
 Date Ordered: 3/8/2002 2:11:42 PM Ship Method: Shipping Price: \$0.00 due closed
 Responsible Emp: Employee2 Tracking NO: open all
 Line Default ETA: Terms: Net overdue
 Ship To: Trans Tech Electric

Goods Ordered Goods Received Goods Still on Order Notes Receive All Items Now

LineItem	Item	StockNo	Qty	ReceivedOn
74	APC - PR-TOTE 330 GAL PULLING LUBE	165372	1	3/8/2002
0			0	4/1/2002

ID	Item	StockNo	QTY Remaining
74	APC - PR-TOTE 330 GAL PULLING LUBE	165372	0
75	CAR - E997J-CAR 2-IN PVC BELL END	104533	10

Record: 2 of 2
 Record: 4 of 4

To receive a partial shipment: Click the dropdown and select the item that was received. And Repeat till all received items are accounted for. Then fill in the received quantities.

To receive a complete shipment: Click the "Receive all items now" button and the PO will be filled and closed automatically.

Searching the PO inventory

Purchase Orders - All

PO No: 20534 Closed Sales Tax Sent to Main On:

Invoice No: 002342 Line Default Job: 560400

Vendor: United Rentals Ship Via: Will Call

Date Ordered: 3/5/2002 Ship Method: N/A

Responsible Emp: Employee1 Shipping Price: \$9.40

Line Default ETA: 3/5/2002 Tracking NO: LV7723423344

Ship To: Trans Tech Electric Terms: Net

Preview PO [Config. Menu](#)

Print PO [Reports Menu](#)

[Datasheet](#) [PO Inventory](#)

due closed

open all

overdue

Receive All Items Now

Item	StockNo	QTY Orderd	QTY Recieved	QTY Remaining	ETA	Days
FILTER, AIR FORAM PRE	422314106C	1	1	0	3/5/2002	27
MUFFLER	422314006C	1	1	0	3/5/2002	27
SCREEN STIHL	422314190C	1	1	0	3/5/2002	27
CLIP/SPARK ARRESTOR-	422314166C	1	1	0	3/5/2002	27
FILTR, AIR MAIN TS4	422314103C	1	1	0	3/5/2002	27
EXHAUST GASKET 034,	112514906C	1	1	0	3/5/2002	27
ENVIRONMENTAL CHARGE		1	1	0	3/5/2002	27
LABOR	LABOR	1	1	0	3/5/2002	27

Record: 1 of 8

Record: 2 of 4

Click the "PO Inventory" button and the form below will appear.

PO Inventory OrderedItems : Select Query

Vendor

Best	MinPrice	MaxPrice	Item	StockNo	Qty	Price	OrderedON	JOB
YES	\$2.30	\$2.75	CAR - E997J-CAR 2: N PVC BELL END	104533	10	\$2.30	3/1/2002	00-200
	\$2.30	\$2.75	CAR - E997J-CAR 2: N PVC BELL END	104533	10	\$2.75	3/8/2002	00-200

Search the PO Inventory

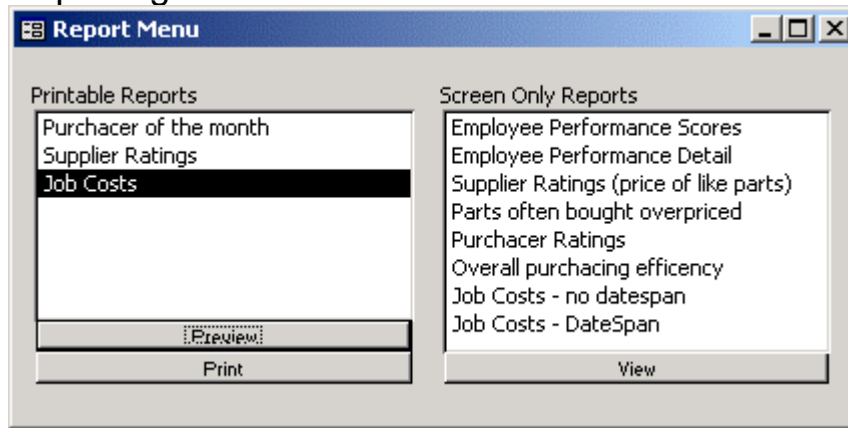
Item: Car* StockNo: Search

TIP: To search with wildcards use the asterisk (*) before or after text Close after results are calculated

Record: 1 of 1

Once a user is prompted with the search form they can either search by Stock no or item name. The user can use wildcards like the example. In the example the user types "Car*" they are displayed with an exportable table that shows suppliers at the top level indicating the variety of suppliers that carry the part. The sub table is in view once the table is expanded and one can find the best price for the part in question.

Reporting



Report Type	Report Style	Description
Purchasers of the month	Printable	Not Configured
Supplier Ratings	Printable	Not Configured
Job Costs	Printable	Displays the list of job codes in the system and prints out the total cost of each job.
Employee Performance Scores	ScreenOnly	Displays a list of purchasing employees and their savings. If expanded shows the parts where the employee saved and lost money if identical parts were ordered in the past.
Employee Performance Detail	ScreenOnly	Exportable spreadsheet that shows each part ordered and the corresponding savings and losses. To use this feature it is recommended to use a standard item name for ordered parts separated in the database by supplier stock number.
Supplier Ratings (price of like parts)	ScreenOnly	Not Configured
Parts often bought overpriced	ScreenOnly	Displays a list of parts often bought overpriced from specific suppliers
Overall purchasing efficiency	ScreenOnly	Displays a calculation of purchasing efficiency. If purchasers are purchasing at the lowest price possible.
Job Costs - no date span	ScreenOnly	Displays an exportable spreadsheet consisting of a list of all jobs and their costs over their entire lifetime.
Job Costs - Date Span	ScreenOnly	Same as above but prompts users for a desired date span.

Editing ship to locations

Purchase Orders - All

PO No: 20534 Closed Sales Tax Sent to Main On:

Invoice No: 002342 Line Default Job: 560400

Vendor: United Rentals Ship Via: Will Call

Date Ordered: 3/5/2002 Ship Method: N/A

Responsible Emp: Employee1 Shipping Price: \$9.40

Line Default ETA: 3/5/2002 Tracking NO: LV7723423344

Ship To: Trans Tech Electric Terms: Net

Preview PO [Config. Menu](#)

Print PO [Reports Menu](#)

[Datasheet](#) [PO Inventory](#)

due closed

open all

overdue

Receive All Items Now

Item	StockNo	QTY Orderd	QTY Recieved	QTY Remaining	ETA	Days
FILTER, AIR FORAM PRE	422314106C	1	1	0	3/5/2002	27
MUFFLER	422314006C	1	1	0	3/5/2002	27
SCREEN STIHL	422314190C	1	1	0	3/5/2002	27
CLIP/SPARK ARRESTOR-	422314166C	1	1	0	3/5/2002	27
FILTR, AIR MAIN TS4	422314103C	1	1	0	3/5/2002	27
EXHAUST GASKET 034,	112514906C	1	1	0	3/5/2002	27
ENVIRONMENTAL CHARGE		1	1	0	3/5/2002	27
LABOR	LABOR	1	1	0	3/5/2002	27

Record: 1 of 8

Record: 2 of 4

By double-clicking the ship to field you can pull up the form below.

ShipToLocations

Turnippers Phone: (480) 839-9245

2236 E. Salado Parkway Fax: (480) 839-9422

Tempe, AZ 85280 4

Crossland Suites Phone: (512) 811-6812

1242 West Walnut Hill Lane Fax: (512) 728-6580

Irving, Texas 75038 5

* Phone: []

Fax: []

[toNumber]

Record: 1 of 2

These buttons will start the windows auto dialer to initiate the telephony functions of your modem

Technical support

Note: There is no technical support for free users.

Please email: support@qasdatabases.com

If you need the source code for this database to enable customization
email: sales@qasdatabases.com

If you need somebody to configure the software for you please email:
consulting@qasdatabases.com

Making the database multi-user

To make the POSystem1 multi user the software must be purchased and a data file must be placed on a shared folder on your company LAN. The database can also be configured to run from an SQL server or an ODBC connection.

Please email:

sales@gasdatabases.com

Modifying POSystem1

Access 2000 is a critical part of Office 2000 and helps deliver on the areas listed above. Microsoft Access is one of the best-selling desktop databases of all time; users love the broad range of tools Microsoft Access provides to enter, analyze, and present data. Microsoft Access 2000 brings not only the traditional broad range of tools but also adds more productivity features, database Web document creation, increased integration with SQL Server, and a tight office programmability model.

- A. Have a consultant customize your Microsoft Office application - This service is available for those unique customers that may have trouble conforming to all of our ready-made cures to business processes. We can develop specific reporting features, add fields, change processes and basically and implement anything you can imagine. Our software engineers are flexible and willing to help in any way we can to get your system online for a reasonable price. If interested please email: Consulting@gasdatabases.com

- B. Order the source and customize it in house. – The POSystem1 is designed to be easily red by a Visual basic and Access proficient individual. You can order the un-compiled version from us and take care of your reworking in House. If interested please contact: sales@gasdatabases.com

Why we are the best - We use 100% Microsoft Access, a critical part of MS Office! Other competitors boast that they are fully customizable. This can't be true unless a un-compiled source code is sold. Our software is written in familiar Microsoft Access, one of the best-selling desktop database of all time; users love the broad range of tools Microsoft Access provides to enter, analyze, and present data. Microsoft Access brings not only the traditional broad range of tools but also adds more productivity features, database Web document creation, increased integration with SQL Server, and a tight office programmability model. You are never stuck with outdated software or the risk of your software company going under! If you want to automate all your processes you have come to the right place.